

For the UKHA who generously supported our online workshops.

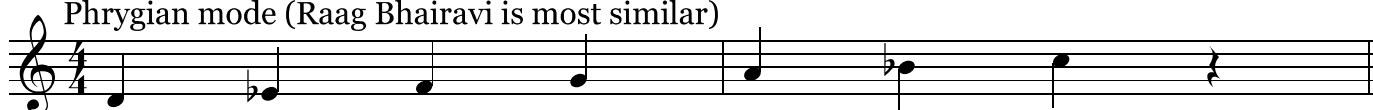
Rhythm Waves Workshop

by Tāla Tarang

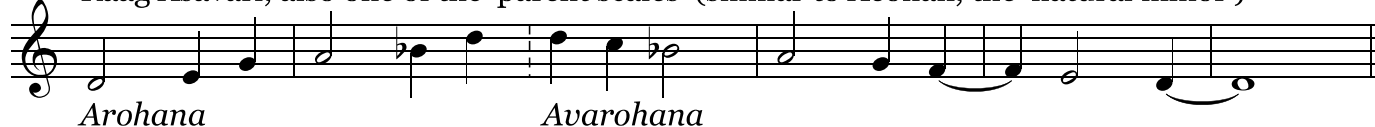
SELECTION OF MODES AND RAGAS

A raga is not a scale - it's an exploration around a melodic framework, in a mode with emphasis on certain notes; often the ascending 'arohana' is subtly different to the descending avarohana. Some of our Western scales and modes bear a close resemblance to some ragas. If we use them sensitively, we can give our harp playing Indian 'colours'.

Phrygian mode (Raag Bhairavi is most similar)



3 Raag Asavari, also one of the 'parent scales' (similar to Aeolian, the 'natural minor')



9 The pitches of Raag Charukeshi



11 Myxolydian mode (similar to Raag Khamaj)



13 Dorian mode (similar to Raag Kafi)

